

Enjoy your visit

The Garden is open dawn to dusk, 365 days a year. The Peggy Lee Hahn Garden Pavilion is open Monday-Friday, 8:30am-4:30pm. Come inside and check out the local art that is on display. Please note that there are no public restrooms available on weekends.

We offer a variety of educational programming throughout the year, including seminars, workshops and garden walks. Visit hahngarden.vt.edu for more information via this QR code:



Volunteer or Donate

Volunteer

We rely on our volunteers for assistance and inspiration. All levels of experience are welcome. Come work in the Garden, become a tour guide, or help with fundraising. Please see the Volunteer tab (under Support) on our website for opportunities.

General Donation

We gladly accept cash donations through the Virginia Tech Foundation's online donation site. Please see the Support tab on our website and click on "Online Giving" for step-by-step directions.

Scan the QR code to the right to learn more about supporting the Garden!



Join our Friend of the Garden Program

Friend of the Garden memberships form the financial foundation of our daily operations and are crucial for our continued growth and development. Use the form on the left side of this sheet to join today!

All members receive:

- Our weekly Email updates and Electronic Newsletters
- Discounts on classes and events
- 10% discount on woody plants (trees and shrubs) at our plant sale
- Reciprocal Garden benefit for one person (Individual) or two people (Dual level and above). This includes free or discounted admission to over 320 public gardens throughout North America and the Cayman Islands. To access a list of participating gardens, visit the American Horticultural Society's website: ahsgardening.org/gardening-programs/rap/ Select the "find a garden" button to search by state, by map or to print a complete list of participating gardens.

Scan this QR code to visit the Support the Garden section of our website and select Become a Friend of the Garden:



All proceeds from rentals, memberships and donations go directly to the Garden Operations Fund and support the purchase of plants, materials, equipment, office supplies, along with providing wages for our student workers.



COLLEGE OF AGRICULTURE AND LIFE SCIENCES
SCHOOL OF PLANT AND ENVIRONMENTAL SCIENCES
VIRGINIA TECH.

Virginia Tech does not discriminate against employees, students or applicants for admission or employment on the basis of race, gender, disability, age veteran status, national origin, religion, sexual orientation, or political affiliation. Anyone having questions concerning discrimination should contact the Office for Equity and Inclusion.

Host your next event in the Garden!



Photo by Kristie Lea Photography

Rent the Garden for your wedding or event!

The Garden is a premiere event venue in the New River Valley. Our beautiful grounds provide a picturesque backdrop for any event, including weddings, family reunions, showers, holiday parties, or tailgates.

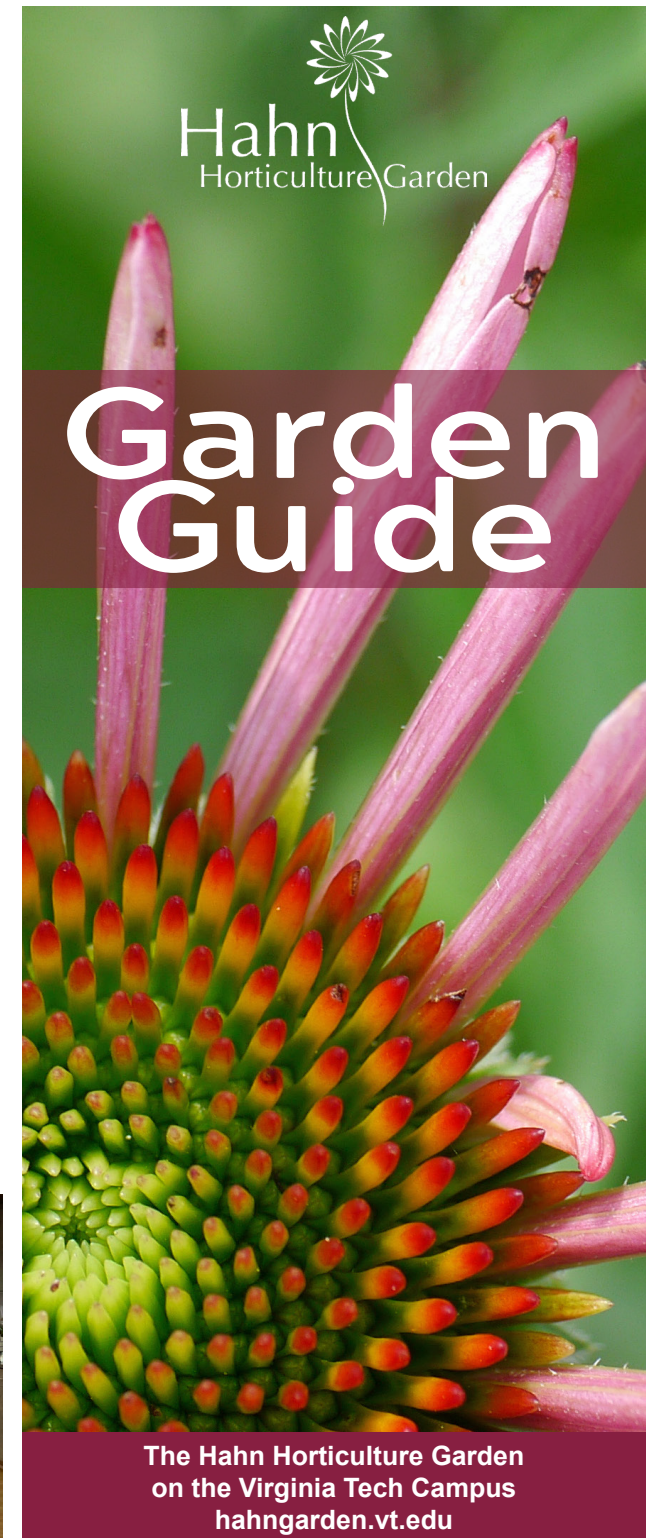
Utilize our indoor and outdoor spaces to create your unique event. You may use any caterer you want or even host a food truck roundup. Our new open-air structure provides seating for up to 184 people at 5' round tables.

For additional information, please scan these QR codes:

Weddings:



Other rentals:



The Hahn Horticulture Garden
on the Virginia Tech Campus
hahngarden.vt.edu

Welcome to the Hahn Horticulture Garden!

The six-acre Garden, established in 1984 by Horticulture faculty, features teaching and display gardens. The Garden serves Virginia Tech students and the local community as a hands-on learning resource for plant material, landscaping concepts and environmental awareness.

While our Garden is located on the VT campus, we do not receive funding for our daily operations from the university. Please see the back page for ways you can support the Garden!



Photographs by Kristi DeCourcy

Contact us:

540-231-5970 vtgarden@vt.edu
200 Garden Lane (0915), Blacksburg, VA 24061

Garden Features

Peggy Lee Hahn Garden Pavilion: Our special events and education facility, made possible by Peggy Lee and T. Marshall Hahn (dedicated in 2006).

Jocylene Couture Nowak Memorial Terrace Garden: A large patio with seating that overlooks the Amphitheater and Peggy's Meadow. Afternoon shade is provided by large red maples.

Vegetable Garden: Displaying herbs and vegetables suitable for the home gardener, this garden features plants from the All-American Selections program.

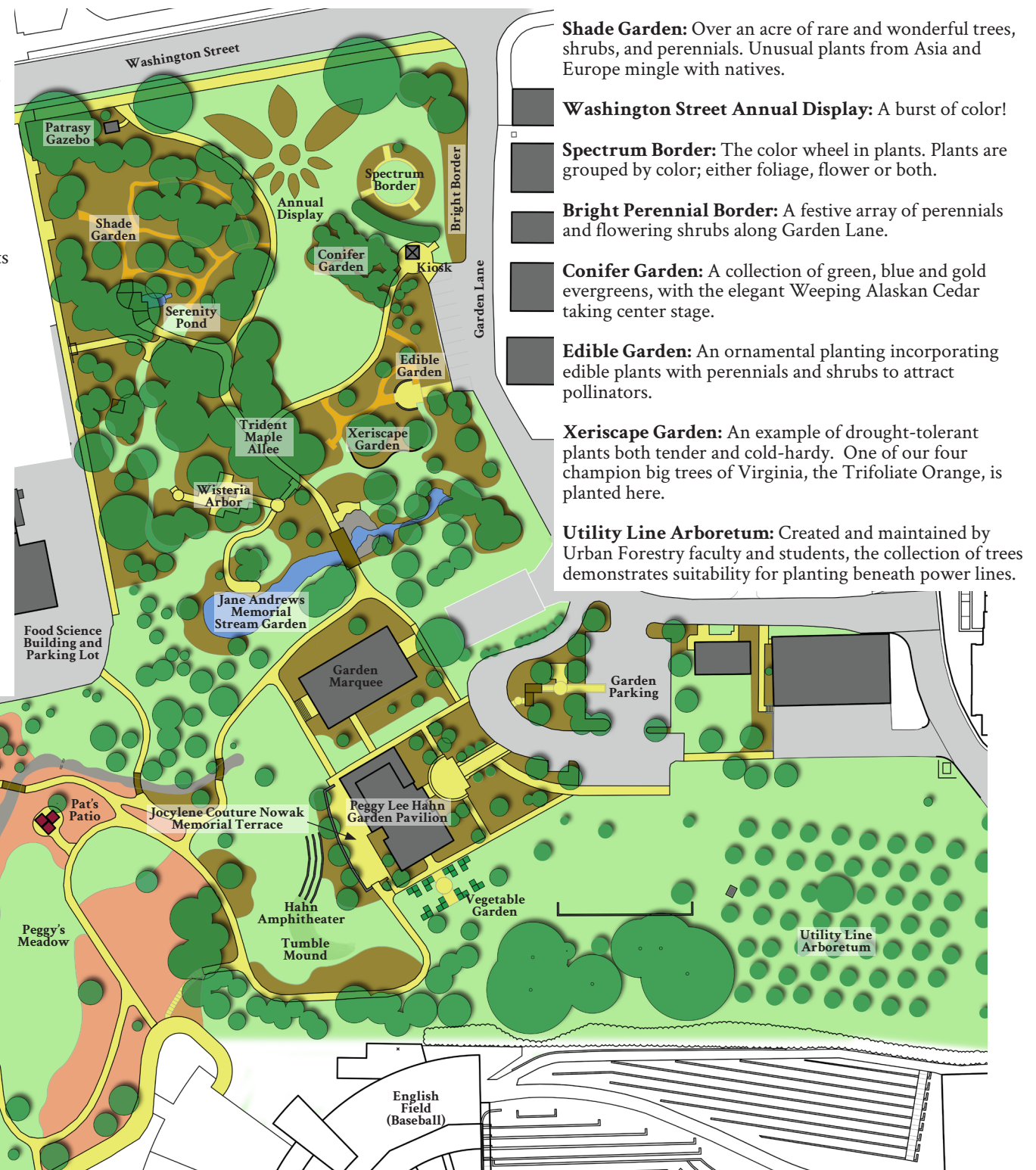
Peggy's Meadow: A pollinator's paradise, the open meadow features native plants and cultivars of natives. Take a break and enjoy the view from Pat's Patio.

Jane Andrews Memorial Stream Garden: A 200 foot long water feature with koi, goldfish, and a variety of aquatic plants.

Wisteria Arbor: Benches beneath the arbor provide a peaceful spot to relax, enjoy your lunch or talk with friends.

Trident Maple Alle: The Maples provide a cathedral-like canopy with under-plantings of shade loving perennials and shrubs.

Serenity Pond: A quiet area shaded by a large Ginkgo and surrounded by some spectacular Japanese Maples.



Shade Garden: Over an acre of rare and wonderful trees, shrubs, and perennials. Unusual plants from Asia and Europe mingle with natives.

Washington Street Annual Display: A burst of color!

Spectrum Border: The color wheel in plants. Plants are grouped by color; either foliage, flower or both.

Bright Perennial Border: A festive array of perennials and flowering shrubs along Garden Lane.

Conifer Garden: A collection of green, blue and gold evergreens, with the elegant Weeping Alaskan Cedar taking center stage.

Edible Garden: An ornamental planting incorporating edible plants with perennials and shrubs to attract pollinators.

Xeriscape Garden: An example of drought-tolerant plants both tender and cold-hardy. One of our four champion big trees of Virginia, the Trifoliate Orange, is planted here.

Utility Line Arboretum: Created and maintained by Urban Forestry faculty and students, the collection of trees demonstrates suitability for planting beneath power lines.

SCALE:
0 30' 45' 60'

English Field (Baseball)